



4 new technology printhead  
**SPECTRA**

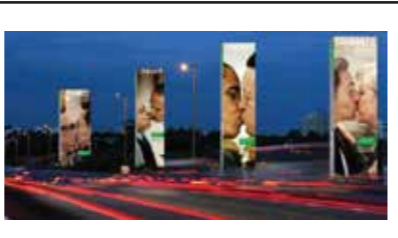
up to 1600  
**DPI**



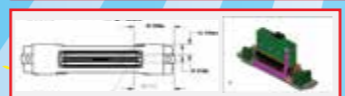
Solvent Ink Spectra polaris

C	M	Y	K	Remarks
				<b>5Lt</b>

MODEL	FOX	
Max Print Width	3200 mm	
Printhead Technology	Spectra Polaris 512 Piezoelectric Head (15pl)	
Printhead Quantity	4	
Printhead Height	2 - 6 mm Automatic Media Adjustment	
Printhead Swatch Width	64.897 mm, 512 Active Nozzels	
Printhead Firing Frequency	25-45KHZ, VSDT 15-30pl	
Print Resolution (dpi)	Up to High Quality 1600 dpi	
Printhead Control	Printhead voltage adjustment by software	
Printing Speed	Model	Output
	2 Pass	90 m <sup>2</sup> /jam
	3 Pass	60 m <sup>2</sup> /jam
	4 Pass	45 m <sup>2</sup> /jam
	6 Pass	30 m <sup>2</sup> /jam
8 Pass	23 m <sup>2</sup> /jam	
Media Type	Frontlite Flex, Backlite, Vinnyl, Mesh, OneWay, etc	
Media Transmission	Auto take up & Feeding system <100kg	
Colors	CMYK 4 Colors	
Ink Type	Solvent Ink	
Cleaning System	Positive Cleaning Syste, Anti Clogging Flush Function & Capping System	
Heating System	3 way intelligent heater	
Windows System	Window2000, NT, XP, Vista, Window7	
Interface	Hi-Speed USB 2.0	
Software	Aprint RIP POLA	
Power Supplay	Single Phase, AC 220V/50HZ 15A	
Work Environment	Temperature: 20°C-28°C, Humidity 40%-70%	
Dimention	Net : L4600 x W860 x H1100 mm / 400kg	
	Gross : L5000 x W907 x H840 mm / 500kg	



### HEAD CONFIGURATION



RIP POLA BY: **Aprint**

EASY to use,  
the color matching,  
Color Corection

# The Best 3.2M Outdoor Printer

## Grand Format Printer WINJET



Polaris FOX



Polaris CRIS



Polaris LIMO

**EXCELLENT PRINT PERFORMANCE**

**SAVE TIME, SAVE COST**

**REVOLUTIONARY HIGH-SPEED PRINTING AT MINIMUM COST**

**DESIGN FOR INDOOR AND OUTDOOR GRAPHICS MARKET**

Aprint 宏华 **1440 DPI** Ink Color **CMYK** Conection **HI-SPEED CERTIFIED USB** Printhead by



# POLARIS CRIS

# POLARIS LIMO



**4/8** new technology printhead  
**SPECTRA**

**4** new technology printhead  
**SPECTRA**

up to **1600** DPI

up to **1600** DPI

Solvent Ink Spectra polaris	Cyan	Remarks
C M Y K	Magenta	5Lt
	Yellow	
	Black	

Solvent Ink Spectra polaris	Cyan	Remarks
C M Y K	Magenta	5Lt
	Yellow	
	Black	

MODEL	CRIS												
Max Print Width	3200 mm												
Printhead Technology	Spectra Polaris 512 Piezoelectric Head (15pl/35pl)												
Printhead Quantity	4/8												
Printhead Height	2.5 - 4.5 mm (Adjustment)												
Printhead Swatch Width	64.897 mm, 512 Active Nozzels												
Printhead Firing Frequency	25-45KHZ, VSDT 15-30pl												
Print Resolution (dpi)	Up to High Quality 1600 dpi												
Printhead Control	Printhead voltage adjustment by software												
Printing Speed	<table border="1"> <thead> <tr> <th>Model</th> <th>Output</th> </tr> </thead> <tbody> <tr> <td>2 Pass</td> <td>160 m<sup>2</sup>/jam</td> </tr> <tr> <td>3 Pass</td> <td>120 m<sup>2</sup>/jam</td> </tr> <tr> <td>4 Pass</td> <td>91 m<sup>2</sup>/jam</td> </tr> <tr> <td>6 Pass</td> <td>61 m<sup>2</sup>/jam</td> </tr> <tr> <td>8 Pass</td> <td>45 m<sup>2</sup>/jam</td> </tr> </tbody> </table>	Model	Output	2 Pass	160 m <sup>2</sup> /jam	3 Pass	120 m <sup>2</sup> /jam	4 Pass	91 m <sup>2</sup> /jam	6 Pass	61 m <sup>2</sup> /jam	8 Pass	45 m <sup>2</sup> /jam
Model	Output												
2 Pass	160 m <sup>2</sup> /jam												
3 Pass	120 m <sup>2</sup> /jam												
4 Pass	91 m <sup>2</sup> /jam												
6 Pass	61 m <sup>2</sup> /jam												
8 Pass	45 m <sup>2</sup> /jam												
Media Type	Frontlite Flex, Backlite, Vinnyl, Mesh, OneWay, etc												
Media Transmission	Auto take up & Feeding system <100kg												
Colors	CMYK 4 Colors												
Ink Type	Solvent Ink												
Cleaning System	Positive Cleaning System, Anti Clogging Flush Function & Capping System												
Heating System	3 way intelligent heater												
Windows System	Window2000, NT, XP, Vista, Window7												
Interface	Hi-Speed USB 2.0												
Software	Aprint RIP POLA												
Power Supply	Single Phase, AC 220V/50HZ 15A												
Work Environment	Temperature: 20°C-28°C, Humidity 40%-70%												
Dimension	Net : L4610 x W877 x H1375 mm / 900kg Gross : L4800 x W1080 x H1800 mm / 1000kg												

MODEL	LIMO												
Max Print Width	3200 mm												
Printhead Technology	Spectra Polaris 512 Piezoelectric Head (15pl/35pl)												
Printhead Quantity	4												
Printhead Height	2 - 6 mm Automatic Media Adjustment												
Printhead Swatch Width	64.897 mm, 512 Active Nozzels												
Printhead Firing Frequency	25-45KHZ, VSDT 15-30pl												
Print Resolution (dpi)	Up to High Quality 1600 dpi												
Printhead Control	Printhead voltage adjustment by software												
Printing Speed	<table border="1"> <thead> <tr> <th>Model</th> <th>Output</th> </tr> </thead> <tbody> <tr> <td>2 Pass</td> <td>90 m<sup>2</sup>/jam</td> </tr> <tr> <td>3 Pass</td> <td>60 m<sup>2</sup>/jam</td> </tr> <tr> <td>4 Pass</td> <td>45 m<sup>2</sup>/jam</td> </tr> <tr> <td>6 Pass</td> <td>30 m<sup>2</sup>/jam</td> </tr> <tr> <td>8 Pass</td> <td>23 m<sup>2</sup>/jam</td> </tr> </tbody> </table>	Model	Output	2 Pass	90 m <sup>2</sup> /jam	3 Pass	60 m <sup>2</sup> /jam	4 Pass	45 m <sup>2</sup> /jam	6 Pass	30 m <sup>2</sup> /jam	8 Pass	23 m <sup>2</sup> /jam
Model	Output												
2 Pass	90 m <sup>2</sup> /jam												
3 Pass	60 m <sup>2</sup> /jam												
4 Pass	45 m <sup>2</sup> /jam												
6 Pass	30 m <sup>2</sup> /jam												
8 Pass	23 m <sup>2</sup> /jam												
Media Type	Frontlite Flex, Backlite, Vinnyl, Mesh, OneWay, etc												
Media Transmission	Auto take up & Feeding system <100kg												
Colors	CMYK 4 Colors												
Ink Type	Solvent Ink												
Cleaning System	Positive Cleaning System, Anti Clogging Flush Function & Capping System												
Heating System	3 way intelligent heater												
Windows System	Window2000, NT, XP, Vista, Window7												
Interface	Hi-Speed USB 2.0												
Software	Aprint RIP POLA												
Power Supply	Single Phase, AC 220V/50HZ 15A												
Work Environment	Temperature: 20°C-28°C, Humidity 40%-70%												
Dimension	Net : L4610 x W877 x H1375 mm / 800kg Gross: L4700 x W970 x H1692 mm / 900kg												

- The design of 8 pcs heads increase output.
- The design of big pulley, more steady step.
- Unaided print head voltage board improve the printing quality.
- Feeding system improve the precision and stability.



- PRINT CARRIAGE**
- 1 print head cover protect print heads
  - 2 buffer ink cartridge store ink
  - 3 Ink inlet tube supply ink to the print heads
  - 4 print heads filter Filter impurities in ink before head

- DRIER SYSTEM**
- 1 fans switch
  - 2 Thermoregulation button
  - 3 Indicator light of infrared dry device
  - 4 Infrared dry device switch
  - 5 fan supply normal wind, accelerate media dry

- MEDIA FEEDING AND TAKE-UP SYSTEM**
- 1 media feeding roller
  - 2 feeding floating roller
  - 3 media feeding sensor

- INK SUPPLY SYSTEM**
- 1 Filter Filter Impurities In Ink
  - 2 Sub In Tank Provide Ink To Print Heads
  - 3 Ink Pump Provide Ink From Main Tank To Sub Tank Or Provide Cleaning Solution To Print Head
  - 4 Buffer Ink Cartridge Store And Exclude Air To Ensure There Any Air In Pipeline

